



Apartment 1, 14 Hutchinson Square, Douglas, Isle Of Man, IM2  
4HT

Asking Price £185,000

- Spacious Modern Ground Floor Apartment Overlooking Hutchinson Square
- Spacious Double Bedroom And Well-Appointed Family Bathroom
- Bright Open Plan Living And Dining Room
- Useful Basement Storage With Newly Fitted Gas Boiler
- Large Separate Kitchen With Ample Cupboard Storage
- Rear Parking Space And UPVC Double Glazing Throughout



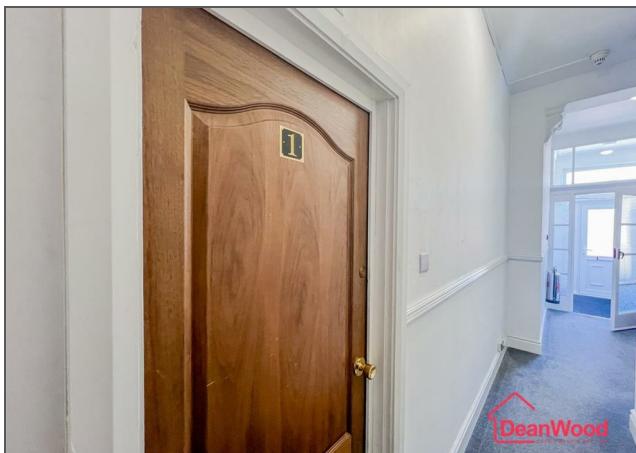
A spacious and modern ground floor apartment, ideally positioned to enjoy attractive views over Hutchinson Square from the bright front-facing living space.

This well-presented home offers generous accommodation throughout, perfectly suited to first-time buyers, downsizers, or investors alike. The welcoming open plan living and dining room provides an excellent space for both relaxing and entertaining, flooded with natural light from the large front window.

Complementing the living area is a sizeable separate kitchen, fitted with ample cupboard storage and workspace, alongside a window overlooking the rear yard, creating a pleasant and practical environment for everyday living. The apartment also benefits from a spacious double bedroom, offering comfortable accommodation with room for additional furnishings, together with a well-appointed family bathroom.

A particular feature of the property is the useful basement area, providing extensive storage space and housing the newly fitted gas boiler, adding both practicality and efficiency to the home. Externally, the apartment benefits from a rear parking space, an increasingly valuable addition in this convenient location.

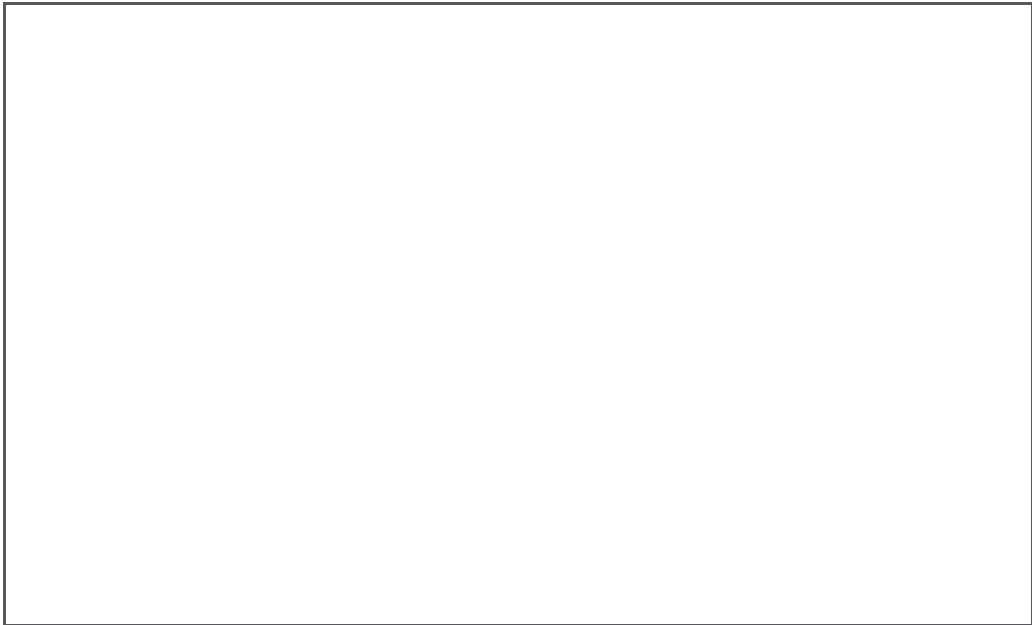
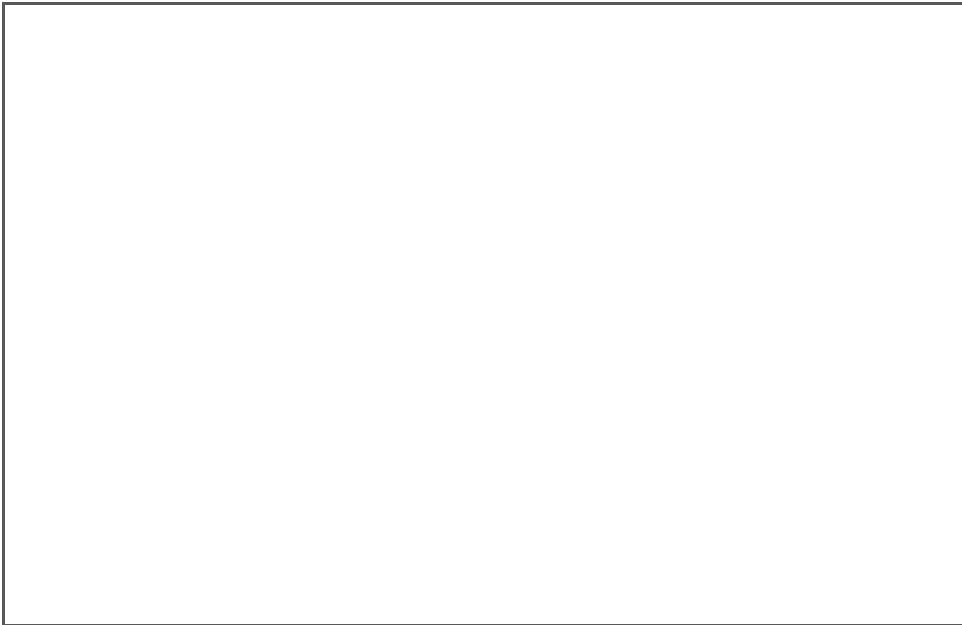
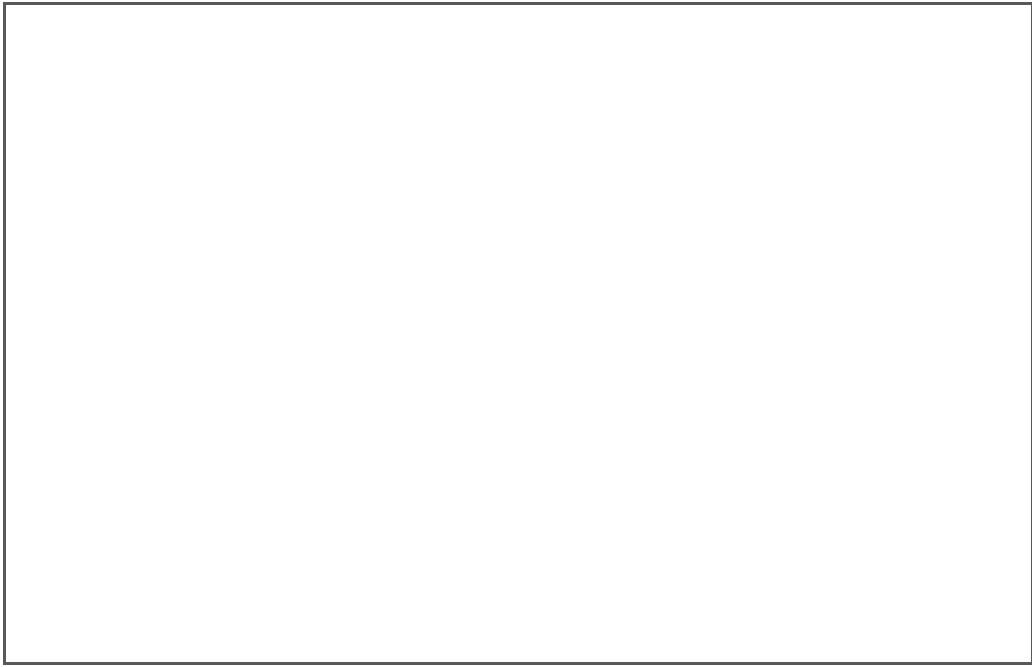
Further enhancing the property are uPVC double glazed windows throughout, helping to maintain warmth and energy efficiency. Combining generous proportions, modern comforts, and a desirable setting overlooking Hutchinson Square, this apartment represents an excellent opportunity to acquire a low-maintenance home in a sought-after location.

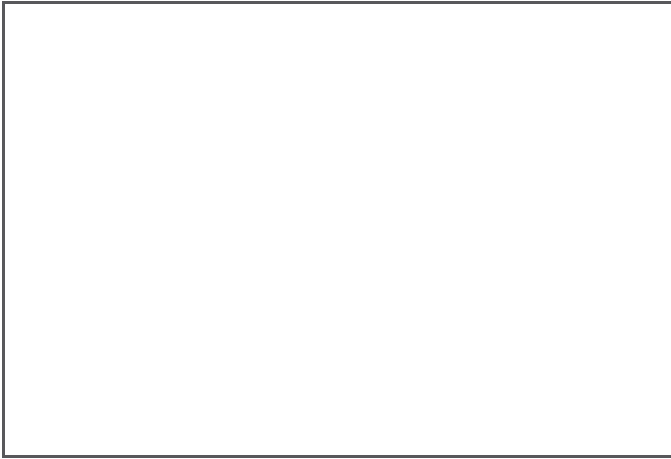








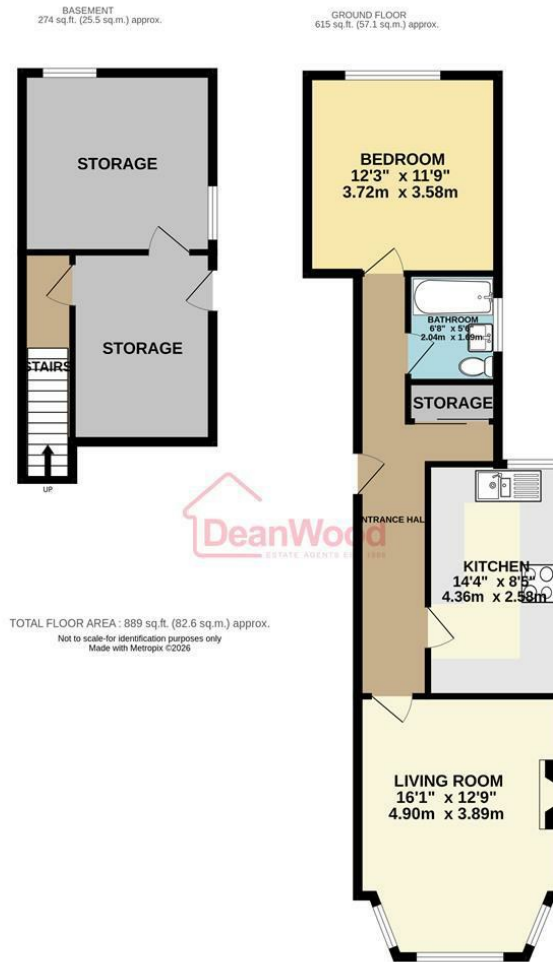




Apartment 1, 14 Hutchinson Square, Douglas, Isle Of Man, IM2 4HT

---





**DOUGLAS**

37 VICTORIA STREET  
DOUGLAS  
ISLE OF MAN IM1 2LF

**T** 01624 620606  
**F** 01624 677363  
**E** info@deanwood.co.im

**CASTLETOWN**

COMPTON HOUSE  
9 CASTLE STREET CASTLETOWN  
ISLE OF MAN IM9 1LF

**T** 01624 825995  
**F** 01624 825996  
**E** castletown@deanwood.co.im

**RAMSEY**

LEZAYRE HOUSE  
87 PARLIAMENT STREET  
RAMSEY ISLE OF MAN IM8 1AQ

**T** 01624 816111  
**F** 01624 816588  
**E** ramsey@deanwood.co.im

These particulars are for information purposes only. They do not constitute or form any contract nor should any statement contained herein be relied upon as a representation of fact. Neither the vendor nor DeanWood Agencies Limited ('the firm'), nor any officer or employee of the firm accept liability or responsibility for any statement contained herein. The vendor does not by these particulars, nor does the firm, nor does any officer or any employee of the firm have any authority to make or give any representation or warranty whatsoever as regards the property or otherwise. It is the sole responsibility of any person interested in the property described in these particulars to make all proper enquiries and searches to verify the description of the property and all other particulars herein.

FOR MORE PROPERTIES VISIT OUR WEBSITE @ [deanwood.im](http://deanwood.im)